

Honeygo Elementary School's Reopening Information

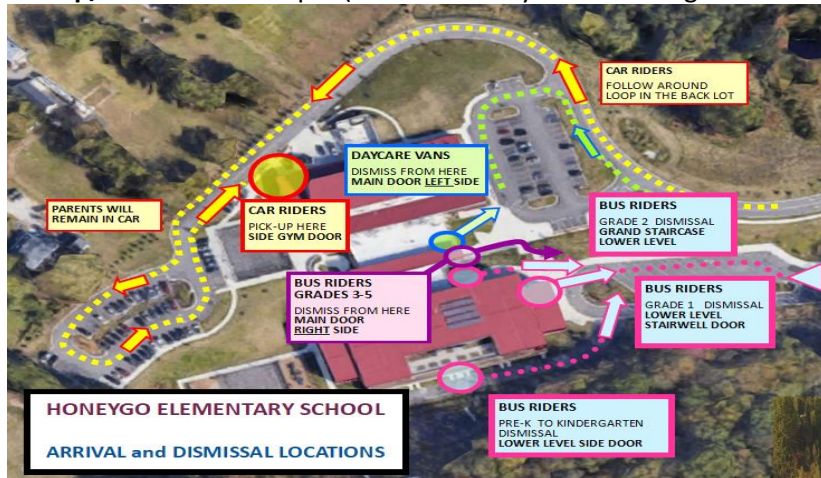
9:20am-3:50pm

Honeygo Elementary is excited to welcome back our students to a safe learning environment. We are partnering with our school community to ensure a smooth transition for students who are returning to the building in a hybrid setting as well as students who are continuing to learn virtually. Additional details about our reopening plan are available on our school website and emailed home to families.

Arrival & Dismissal Procedures: Emailed home and listed on website with detailed maps provided

Dropoff/Arrival -Doors Open at 9:05am

Pick-up/Dismissal - 3:50 pm (Two-hour early dismissal begins at 1:50pm)



Face Covering:

- Face coverings are required for all persons in a BCPS facility or vehicle as well as on BCPS property. Face coverings are required during transportation to/from school on a bus as well as outdoors on campuses. Please label face covering, if possible.
- Each school, office, and school bus will have a supply of disposable face coverings for students and employees who forget their face covering or whose face covering becomes soiled or damaged.

**Put on
your mask now.**



Thank you!

Screening & Stay Home When Appropriate:

- All employees and students are expected to screen themselves daily for symptoms of COVID-19.
- **Remain home** if you have symptoms, confirmed COVID-19 illness, had recent contact with a person with COVID-19 and/or awaiting test results.
- Parents will receive a screening checklist and magnet with the screening practices.

Social Distancing:

- Classroom furniture is arranged to provide 6-foot separation between students, when possible.
- Reduce gathering of students in any area – refer to changes in arrival and dismissal procedures and movement in the hallways.

Hand Hygiene:

- Times for handwashing or use of hand sanitizer to include before and after meals, upon arrival to schools' offices and home, before and after use of any shared items, after use of the restroom, after sneezing/coughing and other time hands are contaminated.

Breakfast & Lunch:

- Students will be provided pre-wrapped breakfast (cold items) and lunch (hot entrée, cold veggie, fruit, milk. Substitution for yogurt available).
- Students will either be eating in the cafeteria or in their classroom with supervision at all times.
- Sharing food is prohibited.

Supplies & Devices:**Please have students bring the following items daily:**

- Charged BCPS device and charger (label both items with student's name and teacher)
- At least 2 face coverings (extras should be in a plastic bag for staying clean)
- Multiple other items as requested by the classroom teacher.

Visitors:

- To visit a BCPS school, visitors must have an appointment.
- Visits will be conducted remotely or outside, whenever possible.
- If an indoor visit is required, visitors will be required to wear a face covering and practice social distancing.
- The number of people admitted to the building will be limited.

Cohort Changes:

- Changing Hybrid Learning to Virtual Learning; email krosenberger@bcps.org
- Changing Virtual Learning to Hybrid Learning; complete the form. https://forms.office.com/Pages/ResponsePage.aspx?id=3cPDSRs_gOGOdLONSDpa_fn3htitMHBPj8ErBKNuyH9URjJVU0tERjI5U0tSU0dDMFVOMjJXUVNVTy4u

Resources:

How BCPS is protecting Students and Staff:

<https://scs.bcps.org/common/pages/DisplayFile.aspx?itemId=66710099>

Daily Covid Screening Tool:

<https://scs.bcps.org/common/pages/DisplayFile.aspx?itemId=66710107>

Face Covering FAQ:

<https://scs.bcps.org/common/pages/DisplayFile.aspx?itemId=66710101>

Social Distancing FAQ:

<https://scs.bcps.org/common/pages/DisplayFile.aspx?itemId=66710105>

Parent University InfoCenter: index of information in Reopening Play by categories: Family Choice, Hybrid Learning, Virtual Learning

https://cos.bcps.org/departments/communications/family_and_community_engagement/parent_university/b_c_p_s_info_center

Healthy Tips for Elementary Students:

<https://scs.bcps.org/common/pages/DisplayFile.aspx?itemId=66710095>

Can my Child go to school today:

<https://scs.bcps.org/common/pages/DisplayFile.aspx?itemId=66710263>

Audience	Request Date Window (Window closes at 5:00 pm on Fridays)	Start Dates (Start dates applicable to the start day of the individual phases)
Phase 1 - Public Separate Day Schools and	Survey window- February 5	Week of March 1
Phase 2- Pre- School through Grade 2	February 6- February 19	Week of March 8
	February 20 – March 5	Week of March 22
	March 6 – March 12	Week of April 6
Phase 3 – OGE Special Education programs Grades 3 - 12 and Select CTE programs	Survey window- February 12	Week of March 15
	February 13- February 26	Week of March 22
	February 27 – March 12	Week of April 6
Phase 4- Grades 3 through 12	Survey window – March 12	Week of March 22 (Grades 6 & 9 only)
		Week of April 6
ALL	March 13 – March 26	Week of April 19
	March 27- April 9	Week of May 3
	April 10 – April 23	Week of May 17
	April 24 – May 7	Week of May 31